



# Crop Report

**MHAIA Board Meeting**  
February 22, 2022





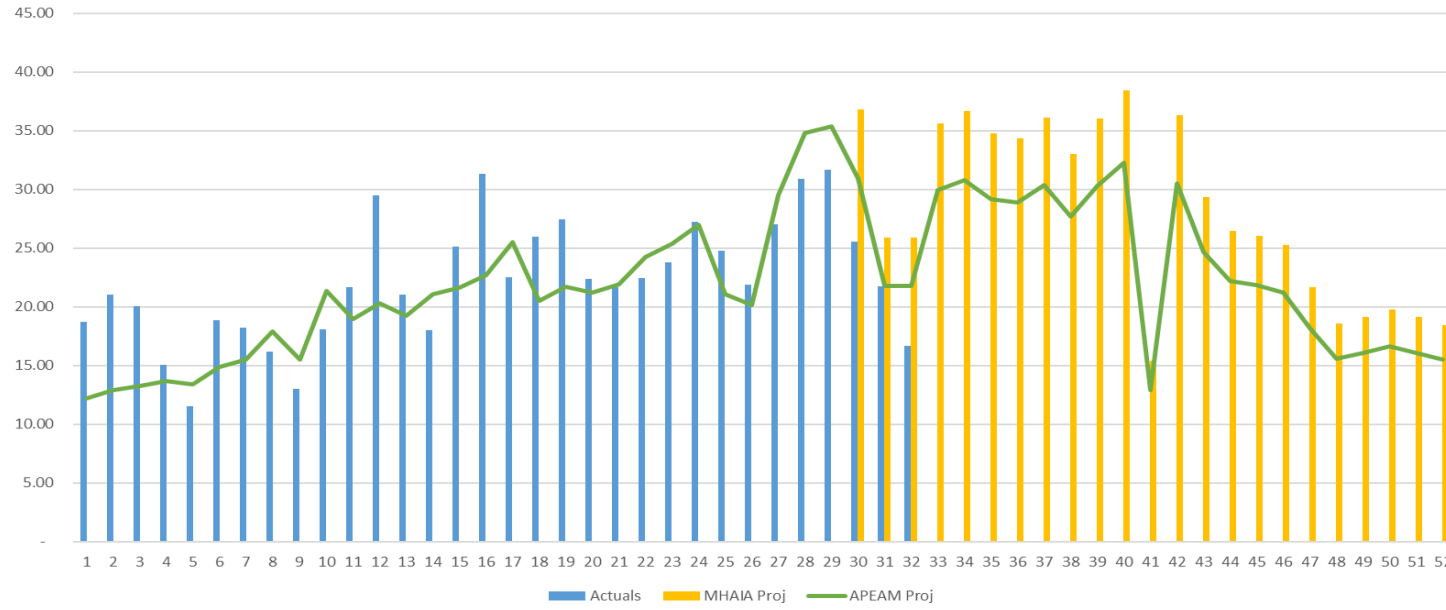
HARVEST (TONS)	TOTAL YEAR PROJECTION	ACTUALS (to Jan 23rd)	ROY (based on 1st Projection)	ROY (Total projection minus actuals)
APEAM	1,147,958.00	646,954.00	545,185.00	501,004.00
MHAIA	1,251,888.84	646,954.00	594,543.54	604,934.84
	<b>NEW MHAIA PROJECTION</b>		<b>649,168.50</b>	<b>649,168.50</b>
	<b>DIFFERENCE (APEAM-MHAIA)</b>		<b>103,983.50</b>	<b>148,164.50</b>

SHIPMENTS (TONS)	TOTAL YEAR PROJECTION	ACTUALS (to Jan 23rd)	ROY (based on 1st Projection)	ROY (Total projection minus actuals)
APEAM	969,450.53	560,602.00	460,408.73	408,848.53
MHAIA	1,057,220.13	560,602.00	502,092.02	496,618.13
	<b>NEW MHAIA PROJECTION</b>		<b>548,222.80</b>	<b>548,222.80</b>
	<b>DIFFERENCE (APEAM-MHAIA)</b>		<b>87,814.07</b>	<b>139,374.27</b>

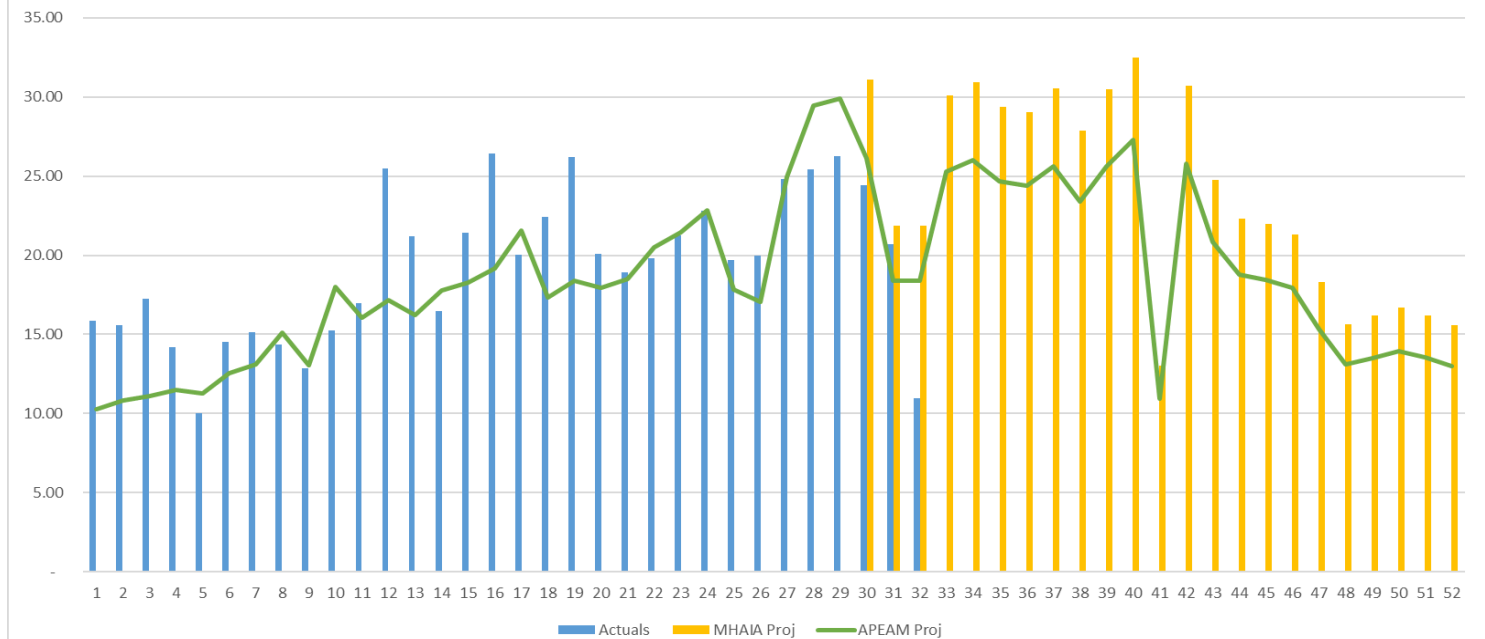
HARVEST (POUNDS)	TOTAL YEAR PROJECTION	ACTUALS (to Jan 23rd)	ROY (based on 1st Projection)	ROY (Total projection minus actuals)
APEAM	2,530,814,173.61	1,426,289,422.50	1,201,927,183.08	1,104,524,751.11
MHAIA	2,759,942,454.39	1,426,289,422.50	1,310,744,144.82	1,333,653,031.89
	<b>NEW MHAIA PROJECTION</b>		<b>1,431,171,559.29</b>	<b>1,431,171,559.29</b>
	<b>DIFFERENCE (APEAM-MHAIA)</b>		<b>229,244,376.21</b>	<b>326,646,808.18</b>

SHIPMENTS (POUNDS)	TOTAL YEAR PROJECTION	ACTUALS (to Jan 23rd)	ROY (based on 1st Projection)	ROY (Total projection minus actuals)
APEAM	2,137,272,569.61	1,204,501,417.30	1,015,027,506.12	932,771,152.31
MHAIA	2,330,771,402.73	1,204,501,417.30	1,106,923,430.30	1,126,269,985.43
	<b>NEW MHAIA PROJECTION</b>		<b>1,208,624,381.82</b>	<b>1,208,624,381.82</b>
	<b>DIFFERENCE (APEAM-MHAIA)</b>		<b>193,596,875.71</b>	<b>275,853,229.51</b>

Harvest (tons) APEAM Projection vs MHAIA Projection ROY



Shipments (tons) APEAM Projection vs MHAIA Projection @84.4%





# Harvest to Feb 19th

\* Information about shipments until Feb 19<sup>th</sup> is not available at the time of the report

PERIOD	1/30/2022	2/6/2022	2/13/2022	2/20/2022
WEEK (Calendar year)	4	5	6	7
WEEK (Crop year)	30	31	32	33
<b>Projection (tons)</b>	30,924.88	21,751.62	21,741.05	29,935.02
<b>Actuals (tons)</b>	25,536.00	21,737.00	16,700.00	2,190.00
<b>MHAIA Projection (tons)</b>	36,823.14	25,900.29	25,887.70	35,644.49
<b>Difference (tons) MHAIA</b>	<b>(11,287.14)</b>	<b>(4,163.29)</b>	<b>(9,187.70)</b>	<b>(33,454.49)</b>
<b>Difference (tons) APEAM</b>	<b>(5,388.88)</b>	<b>(14.62)</b>	<b>(5,041.05)</b>	<b>(27,745.02)</b>

PERIOD	1/30/2022	2/6/2022	2/13/2022	2/20/2022
WEEK (Calendar year)	4	5	6	7
WEEK (Crop year)	30	31	32	33
<b>Projection (Pounds)</b>	68,177,681	47,954,123	47,930,820	65,995,423
<b>Actuals (Pounds)</b>	56,297,243	47,921,882	36,817,198	4,828,124
<b>MHAIA Projection (Pounds)</b>	81,181,128	57,100,355	57,072,608	78,582,650
<b>Difference (Pounds)</b>	<b>(24,883,885)</b>	<b>(9,178,473)</b>	<b>(20,255,410)</b>	<b>(73,754,527)</b>
<b>Difference (tons) APEAM</b>	<b>(11,880,438)</b>	<b>(32,241)</b>	<b>(11,113,622)</b>	<b>(61,167,299)</b>

Harvest (tons) APEAM Projection vs MHAIA Projection ROY

